



— *Albert Sutter, c.1906*



Mr. Ewer moved an amendment to the charter exempting from municipal taxes all wine or brandy manufacturers and their contents which might be included in their incorporation. The wine interest is all important to us, and should be fostered and encouraged. The motion was carried.

**KEEPING HISTORY  
ALIVE 2025**





We make it easy to donate | [shstory.org/donate](https://shstory.org/donate)



As we wrap up a busy year and look to the year ahead, we're excited to continue preserving and sharing the stories that bring our community together. Thank you for being part of this work—for visiting, for volunteering, and for keeping our local history alive.

We look forward to greeting you at our 2026 events.

—All of the hardworking Historical Society Board members and volunteers.

### A Year in Review





## A RECEPTION AND TWO NEW EXHIBITS

The Historical Society introduced two new exhibits with a reception, wine and bites. **Mike's Bikes.** Congressman Mike Thompson's a cyclist who also collects vintage bicycles, including the Typhoon, which was Thompson's first "new" bike. **"The Valley Beautiful: Architecture"** exhibit includes St. Helena's beautiful post office. Commissioned in 1939, it was part of the New Deal's WPA program.



Olive Oil Co.



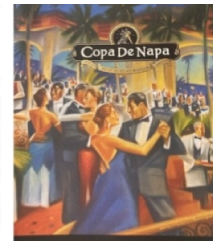
Prager Winery & Port Works



David Hudson

## WINE AUCTION MEMORABILIA

We loved this donation: Stunning programs, passes and paddles from Napa Valley's wine auction that are works of art, from 1999-2000.

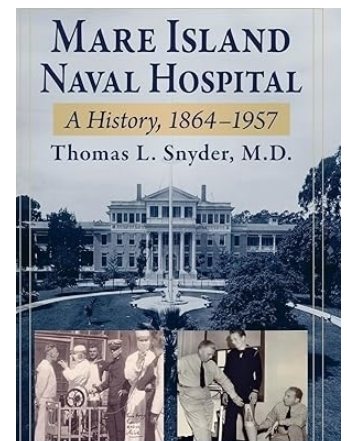


## DINNER AT THE MUSEUM FUNDRAISER

Now officially an annual mid-summer event. Paella and wine from Napa's vineyards. One of the highlights of the silent auction was the progressive dinner—think about four kinds of hors d'oeuvres on just the first stop. A wonderful evening of great food with friends.

## MARE ISLAND NAVAL HOSPITAL, 1864-1957; AUTHOR TOM SNYDER MD

In August 1943, the Pacific Orthopedic Center at Mare Island Hospital was charged with fitting all Navy and Marine Corps amputees with prosthetic limbs. Their skilled engineers and mechanical experts helped design the ambulance boats. Prior to World War II, the hospital held 600 patients. During the war, it grew to 2,300.

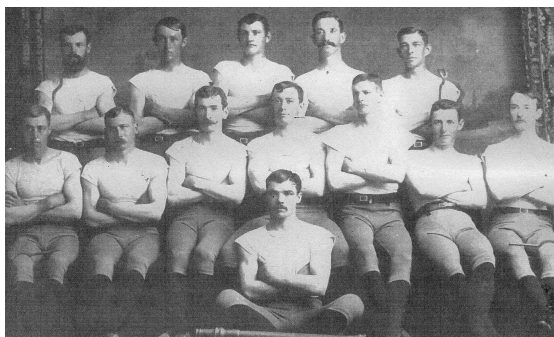


## INCORPORATION 1876: CELEBRATING 150 YEARS

The first election was on April 15, 1876. Election day was reportedly “a model of propriety and municipal peace. These settlers had to learn how to become the bankers and postmasters, the town constables and justices of the peace that their new community needed.

### Taxes enabled them to provide services

Public health, safety and education. They needed departments for infrastructure, fire and education.



1887 Americus Hose Racing Team

### Concern about morality

The articles of incorporation included a clause about “prohibiting gaming and gambling houses, dance-houses, houses of ill fame and all kinds of vice and immorality.”

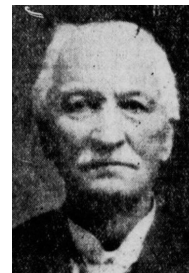
In California in the 1850s, 90% of the population was male. Not surprisingly, the brothels continued to flourish!



## THE EMERGENCE OF THE CITY'S LEADERSHIP

Many of the early immigrants wanted to help shape the growth of their new homeland and held positions of leadership.

**William Elgin** left Missouri with a herd of cattle on a wagon train. He was a county supervisor and assessor, town treasurer for 15 years, reelected justice of the peace four times and was a postmaster.



**Dimsdill Burr Carver** was drawn by California's gold mines, but he was also a postmaster, a vintner and merchant. Most important contribution? Founder of the city's first bank.



Chas Krug came down Wednesday from Sacramento. We would suggest that in view of the yeoman service he has done St. Helena, he be selected as the next Representative from Napa County to the Legislature.



—*St. Helena Star. March 1876*

### IT'S EASY TO DONATE

We're an all-volunteer, 501(c)3 organization. SHHS relies on grants and donations to sustain us. Every contribution helps us underwrite our programs and keep our doors open. Donate online at [shstory.org/donate](http://shstory.org/donate) Or use the envelope provided. Tax ID#: 30-0087096.

1255 Oak Avenue, St. Helena, CA 94574 | PO Box 87 | 707.967.5502

Name \_\_\_\_\_

Address \_\_\_\_\_

Email \_\_\_\_\_ Phone \_\_\_\_\_

Donation: \$1000\_\_\_\_ \$500\_\_\_\_ \$250\_\_\_\_ \$100\_\_\_\_ \$50\_\_\_\_ \$\_\_\_\_

Check enclosed \_\_\_\_\_ Charge my credit card \_\_\_\_\_

Card No. \_\_\_\_\_ Exp. Date \_\_\_\_\_ Security Code \_\_\_\_\_

Signature \_\_\_\_\_